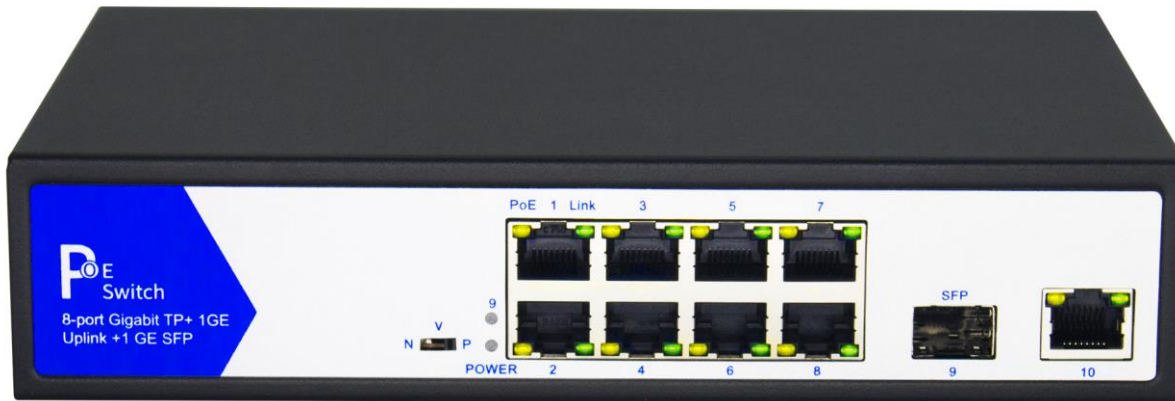


Item no.: 21.99.1193

VALUE Ethernet PoE Switch, 8x PoE + 1GbE + 1SFP, black



Features:

- Support 8x10/100/1000Base-TX PoE ports, RJ45
- Support 1x10/100/1000Base-TX RJ45 and 1x1000Base-FX SFP uplink ports
- Support IEEE802.3af/at POE standards, max. 30W output each port
- Support 10/100/1000Base-T auto-sensed, Full/half duplex auto-sensed
- 20G switching capacity, high bandwidth for data transmission
- Support one key VLAN mode/Extra transmission mode
- Reliable design of built-in power mode, up to 120W power output totally
- Anti lightning and surge protection
- Metal casing in black
- Operation Temperature: -20°C ~ 65°C
- Storage Temperature: -40°C ~ 70°C
- Relative Humidity: 10 ~ 90% (non-condensation)