



Datenblatt - Fiche technique - Data sheet

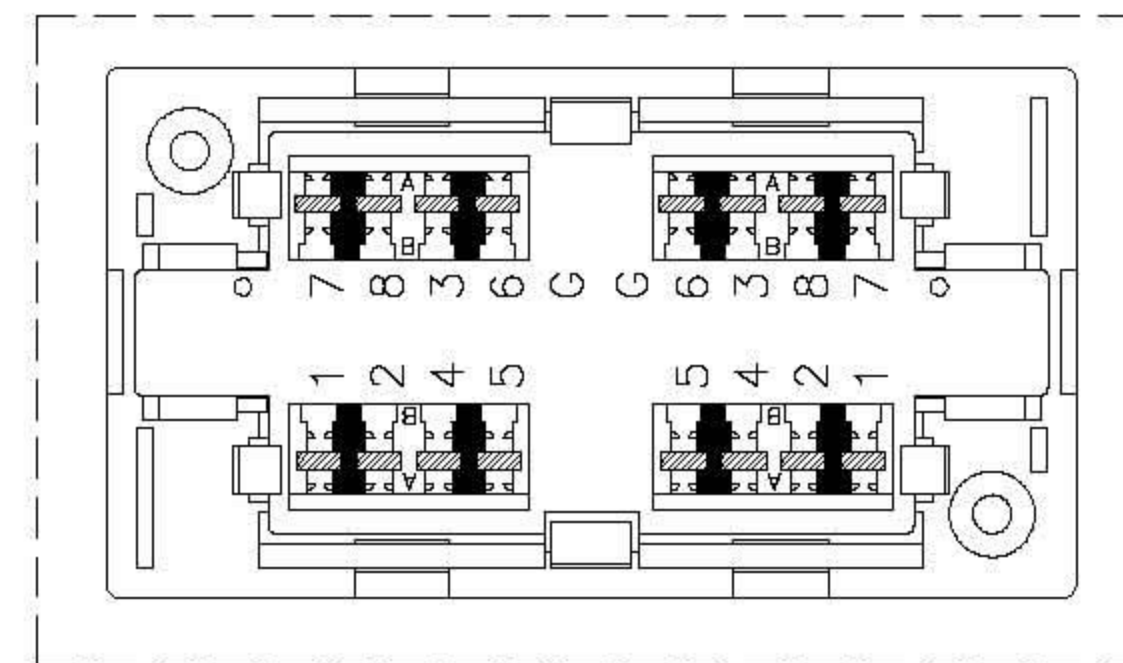
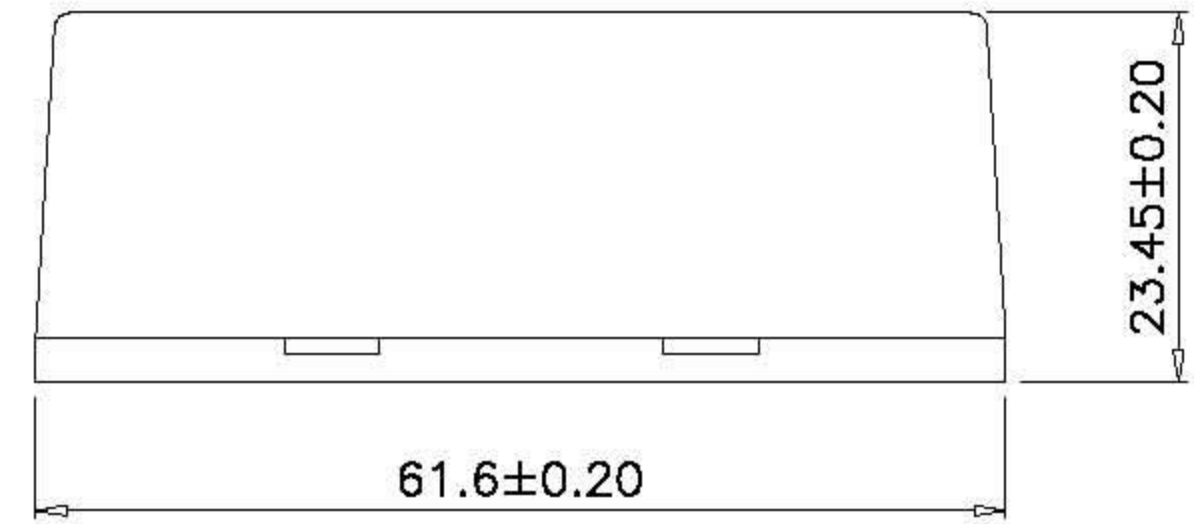
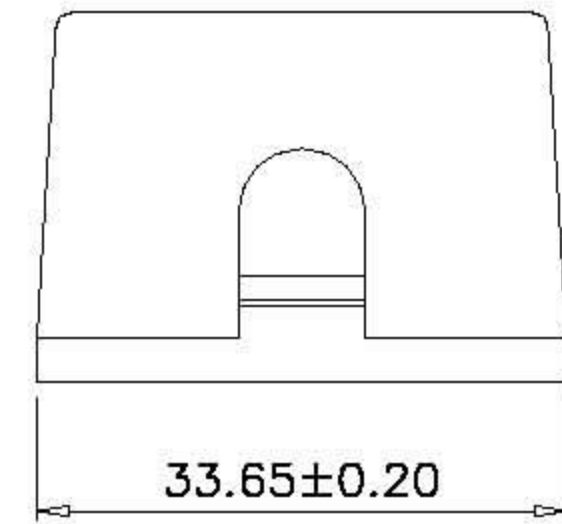
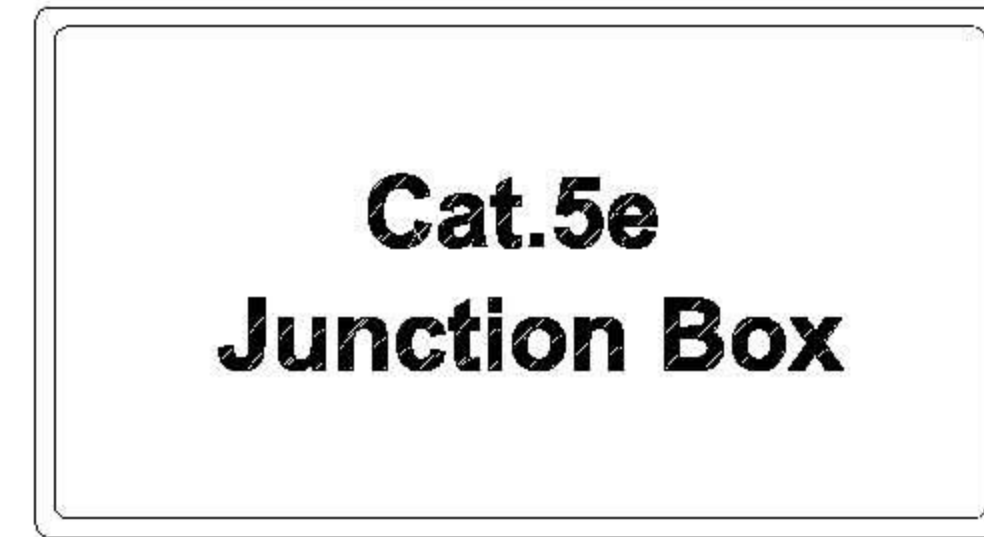
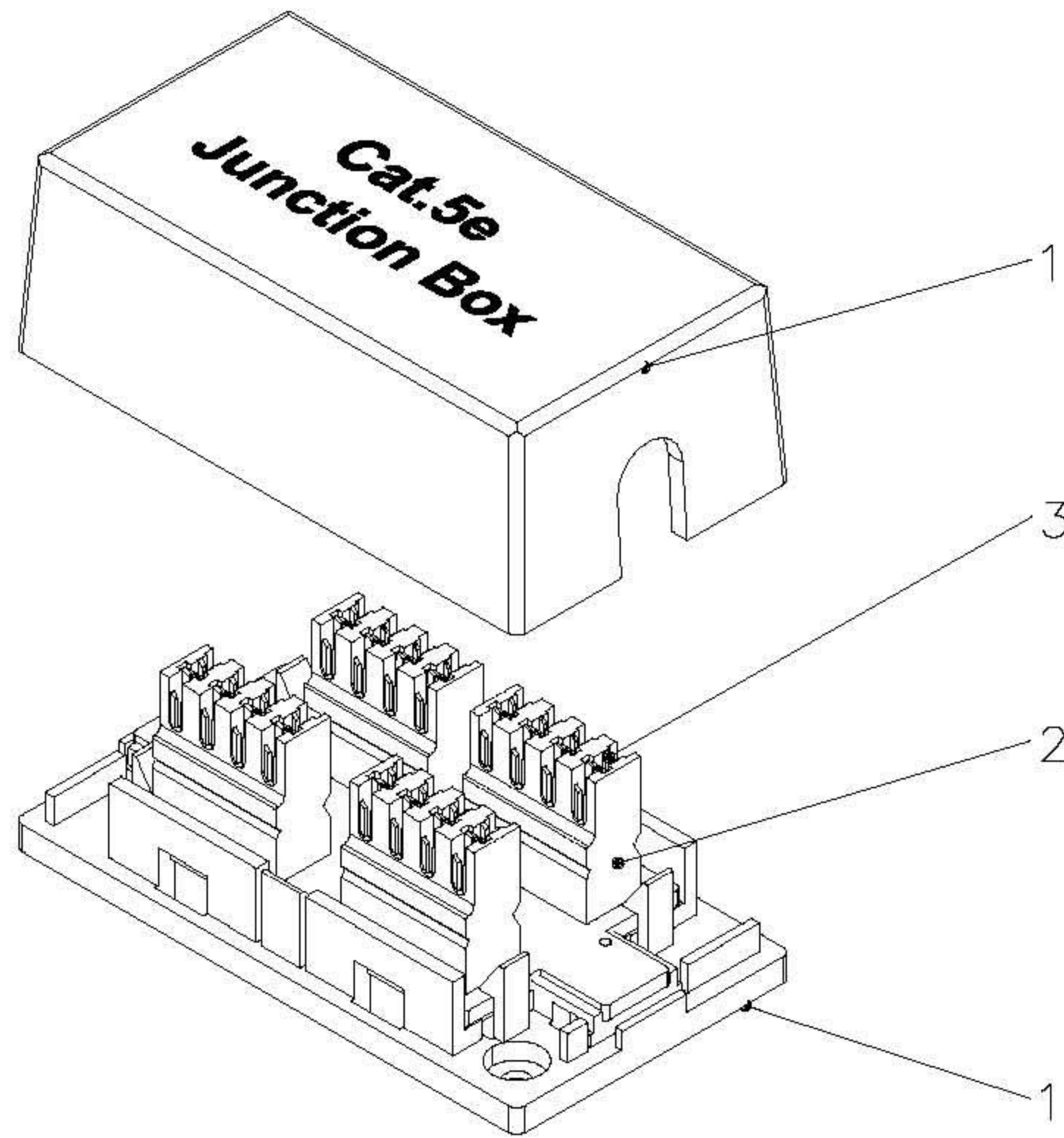
21.17.3036



ROLINE Junction Box Kat. 5e, UTP

ROLINE Module de liaison Cat. 5e, UTP

ROLINE Junction Box Cat.5e, UTP



Specification :

Material :

1. Housing : ABS, UL 94V-0.
2. IDC Housing : Polycarbonate, UL 94V-2, 110 dual.
3. IDC Terminal material & finished :
 - 3-1. Phosphor Bronze with 50 micro-inch Tin plated.
 - 3-2. Use for 22-26 AWG solid and Stranded wires.

Performance :

- a. The IDC color codes combine two wirings of T568A & T568B.
- b. Operation Temperature : -40°C to 80°C.
- c. Durability :
 - IDC : Max. 200 punching times.
- d. The Cat.5e performance is in compliance with the ANSI/TIA/EIA 568 B.2 standard.

GENERAL TOLERANCE OF DIMENSIONS X.XXX ±0.005 X.XX ±0.05 X.X ±0.1	DRAWING	17.MAR.2009	Connie	rotronic	
	CHECK	17.MAR.2009	KLi		
	APPROVAL	17.MAR.2009	Yty		
		DATE	NAME	ITEM NO.: 21.17.3036	
	SCALE	1/1 (A4)	UNIT	mm	DES.: Cat.5e Junction Box Unshielded
		DRAWING NO.	JE316-CEUS/WH(SA1)		
		DRAWING CLASSIFICATION		SHEET	1 OF 1

