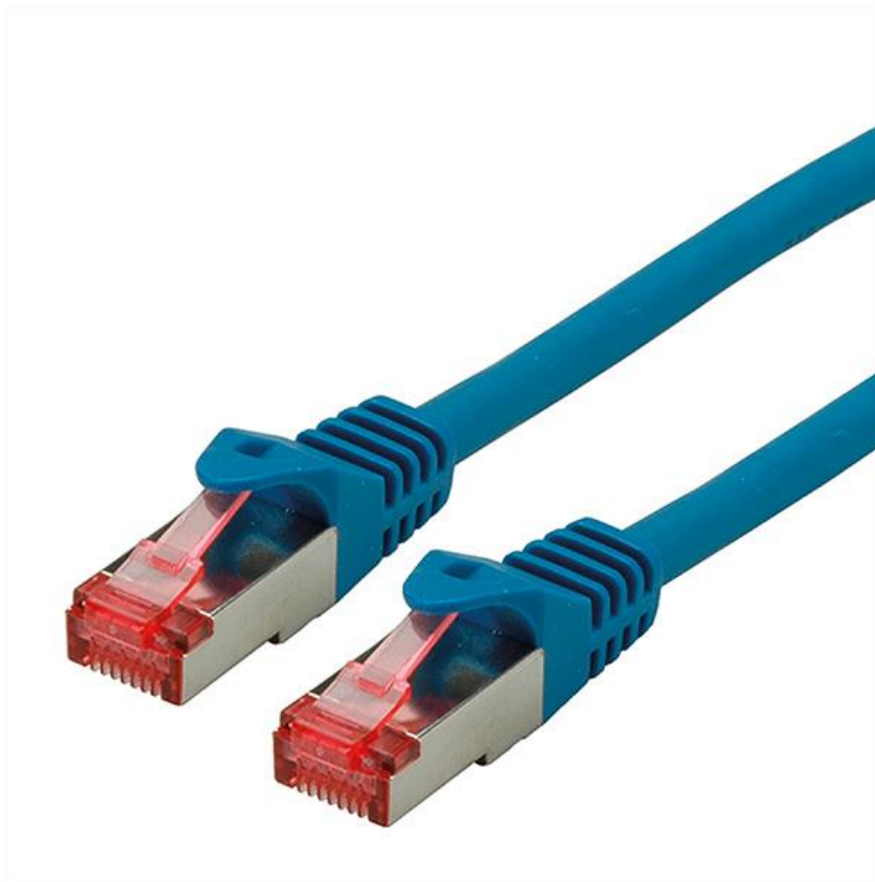




Datenblatt - Fiche technique - Data sheet

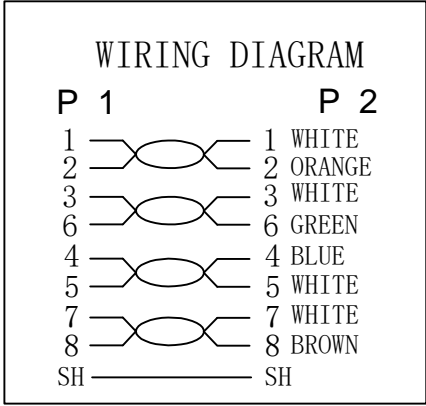
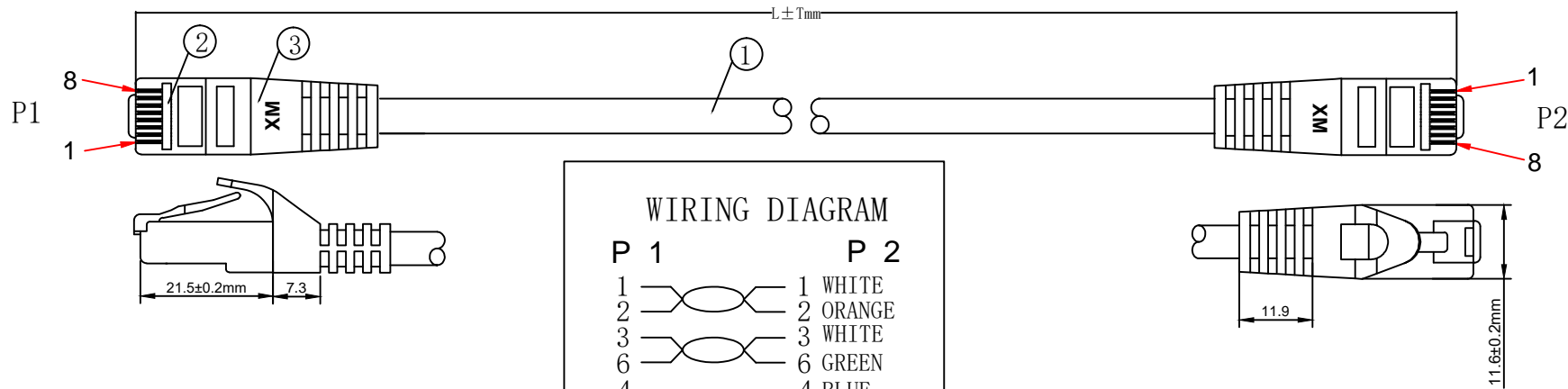
21.15.2644



ROLINE Patchkabel Kat.6 S/FTP (PiMF), Component Level, LSOH, blau, 1,5 m

Cordon ROLINE S/FTP(PiMF) Cat.6, LSOH, Component Level, bleu, 1,5 m

ROLINE S/FTP Patch Cord Cat.6 Component Level, LSOH, blue, 1.5 m



1. ELECTRICAL TEST:

- (1). 100% OPEN SHORT & MISS WIRE TEST;
- (2). INSULATION RESISTANCE:DC 250V 20M OHM MIN;
- (3). CONTACTOR RESISTANCE:30 OHM MAX

2. PRINTING:GHMT® roline CAT.6 S/FTP COMPONENT PATCH CORD LSZH 250MHz ISO/IEC 11801 & EN 50173-1 & ANSI/TIA-568-C.2

- 3. 100% Component Patch cord Test PASS
- 4. Minimum bending radius:60mm

MATERIAL LIST

⑥	LABEL	NO DRY GLUE LABEL	1PCS	
⑤	MINI TIE	PE MINI TIE (POSSESS METAL)	2PCS	
④	POLYETHYLENE BAG	POLYETHYLENE BAG	1PCS	
③	OVER MOLD	88A PVC blue	2PCS	
②	CONNECTOR	RJ45 8P8C'S SHIELDED PIN GOLD PLATED 3u", SHELL PLATED NICKEL Transparent RED	2PCS	
①	CABLE	S/FTP CAT.6 26AWG (BC*1P+AL-FOIL)*4P+BRAID CABLE JACKET LSOH OD=6.2 ± 0.2MM	1PCS	
NO.	PARTS NAME	SPECIFICATION STANDARD	QT' Y	REMARK

COLOUR:blue (PANTONE:647C)

ITEM NO.	LENGTH (L)	TOLERANCE (T)
21. 15. 2955	300mm	± 10mm
21. 15. 2640	500mm	± 15mm
21. 15. 2641	1000mm	± 30mm
21. 15. 2644	1500mm	± 45mm
21. 15. 2642	2000mm	± 60mm
21. 15. 2643	3000mm	± 90mm
21. 15. 2645	5000mm	± 150mm
21. 15. 2646	7500mm	± 210mm
21. 15. 2647	10000mm	± 300mm
21. 15. 2648	15000mm	± 450mm
21. 15. 2649	20000mm	± 600mm

ITEM NO.	21. 15. 2955	21. 15. 2640	21. 15. 2641	21. 15. 2642	21. 15. 2643
21. 15. 2644	21. 15. 2645	21. 15. 2646	21. 15. 2647	21. 15. 2648	21. 15. 2649
DESC.	ROLINE S/FTP PatchCord CAT. 6, LSOH, Comp. Level, blue				

SECOMP

BY	CHK	REVISION RECORD MODIFICATIONS	DATE	REV.

NEW 2016-10-20 A