



TEST-i

Multi Function Cable Tester

The third generation of PC cable tester TEST-i, a specially designed multi function cable tester that tests and analyzes a comprehensive range of PC connector types and the most commonly used flat cables.

The TEST-i not only tests each pins connection to identify opened wires, shorted wires, cross wires, and mis-wires. It also shows pin-to-pin connectivity, and can also records up to 100 test results. The crucial data collected can be saved and uploaded to a PC via USB for analysis. With an integrated LCD display (with back light function), users can clearly determine the cable pin wiring easily and efficiently. The TEST-i makes an excellent and essential tool for a system integrator to quickly troubleshoot and perform pin-to-pin test on PC cables.

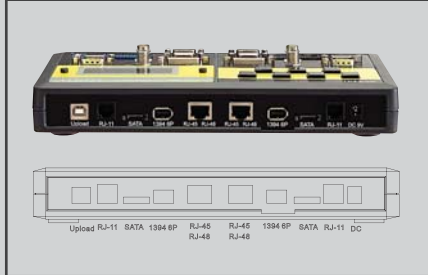
Features

- Identify opened wires, shorted wires, cross wires, and mis-wires connectivity
- Support 18 flat types of PC connectors
- 100 test results can be saved and transferred to PC via USB line
- Alphanumeric LCD display with back light
- With test cable, browse, quick test function
- Low battery indicator

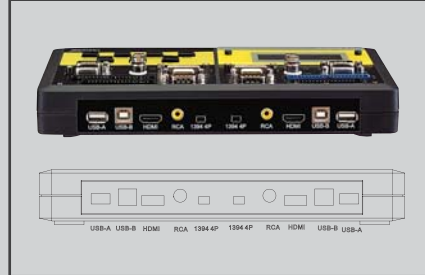
Specifications

- Model No.: 258898
- Connectors: IDC40, IDC34, DVI29, HDB15M/F, DB9M/F, COAX, BNC, RJ11, RJ45, 1394-6P, 1394-4P, SATA, USB (A/B), HDMI, RCA
- Control switch: On/OFF, UP, DOWN, SAVE, DELETE, BACK, ENTER
- Display: LCD size, 2 rows-16 characters, backlight
- Power: DC 9V battery compartment, DC 9V 150mA power jack (adapter not included)

Front side



Back side



Order Information

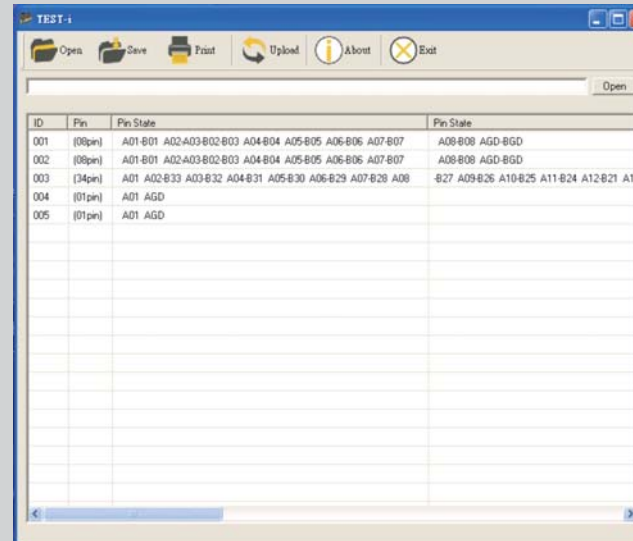
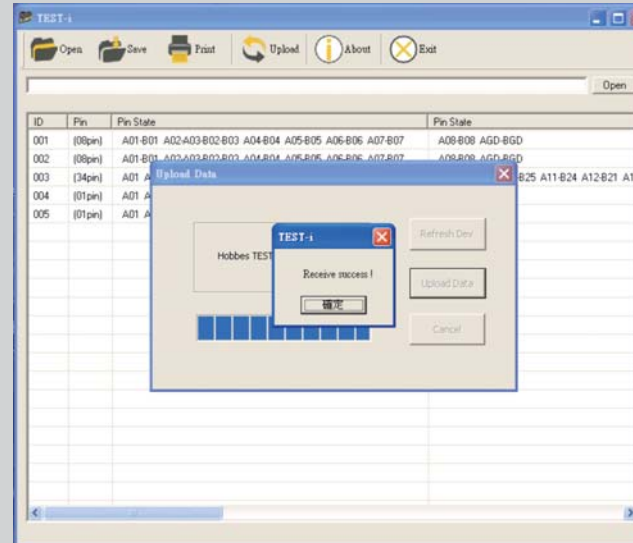
258898 TEST-i Multi function cable tester

Related Products



- Ribbon Cable Tester Pin number 20 was taken off for IDE 40 pins cable test

TEST-i uploading data



Cable Tester	258894	258891A	258898
Connectors	TX: IDC 50/40/34/26/10 Male, DB15 Male, DB9 Female RX: IDC 50/40/34/16/10 Male DB25 Male and Female	TX: D25 M/F, DB9 M/F, HDB 15/M, DB15/M, RJ45/F RX: Centronics 36/F, DB25 M/F, DB9 M/F, HDB15/F, DB15/F, RJ45/F BNC female, 1394 socket, USB socket, Series ATA	IDC40, IDC34, DVI29, HDB15M/F, DB9M/F, COAX, BNC, RJ11, RJ45, 1394-6P, 1394-4P, SATA, USB (A/B), HDMI, RCA
Control switch	READ, UP, DOWN, TEST	Wire numbers select, Test (For manual operation), Auto/Manual scanning switch, Scanning speed HI/Low switch, Power on/off switch	Control Switch ON/OFF, UP, DOWN, SAVE, DELETE, BACK, ENTER
Extension Port	2 x 40 pins IDC male connectors	stand alone	stand alone
Display	LCD display w/back light	TX: 25 LEDs RX: 36 LEDs Battery Low x 1 Ground TX Ground RX 4 sections wires selection (for 4,9,15,25)	LCD display w/back light
Power	9V DC battery or 9V DC 150mA power adapter	DC 9V battery compartment DC 9V 150mA power jack	Power DC 9V battery compartment, DC 9V 150mA power jack (adapter not included)
Cable test	Opened, shorted, mis-wires continuity, and pin configuration	Opened, shorted, mis-wires, continuity, and pin configuration	Opened, shorted, cross wires, mis-wires, and pin-to-pin
Wire map	Yes	Yes	Yes
Quick test	Yes	No	Yes
Save	No	No	save and uploaded to PC via USB line
Data	No	No	100 results
Dimension	250 x 134 x 35mm	250 x 130 x 35mm	250 x 138 x 44mm
Weight	757.6g	668.1g	802.7g