



Datenblatt - Fiche technique - Data sheet

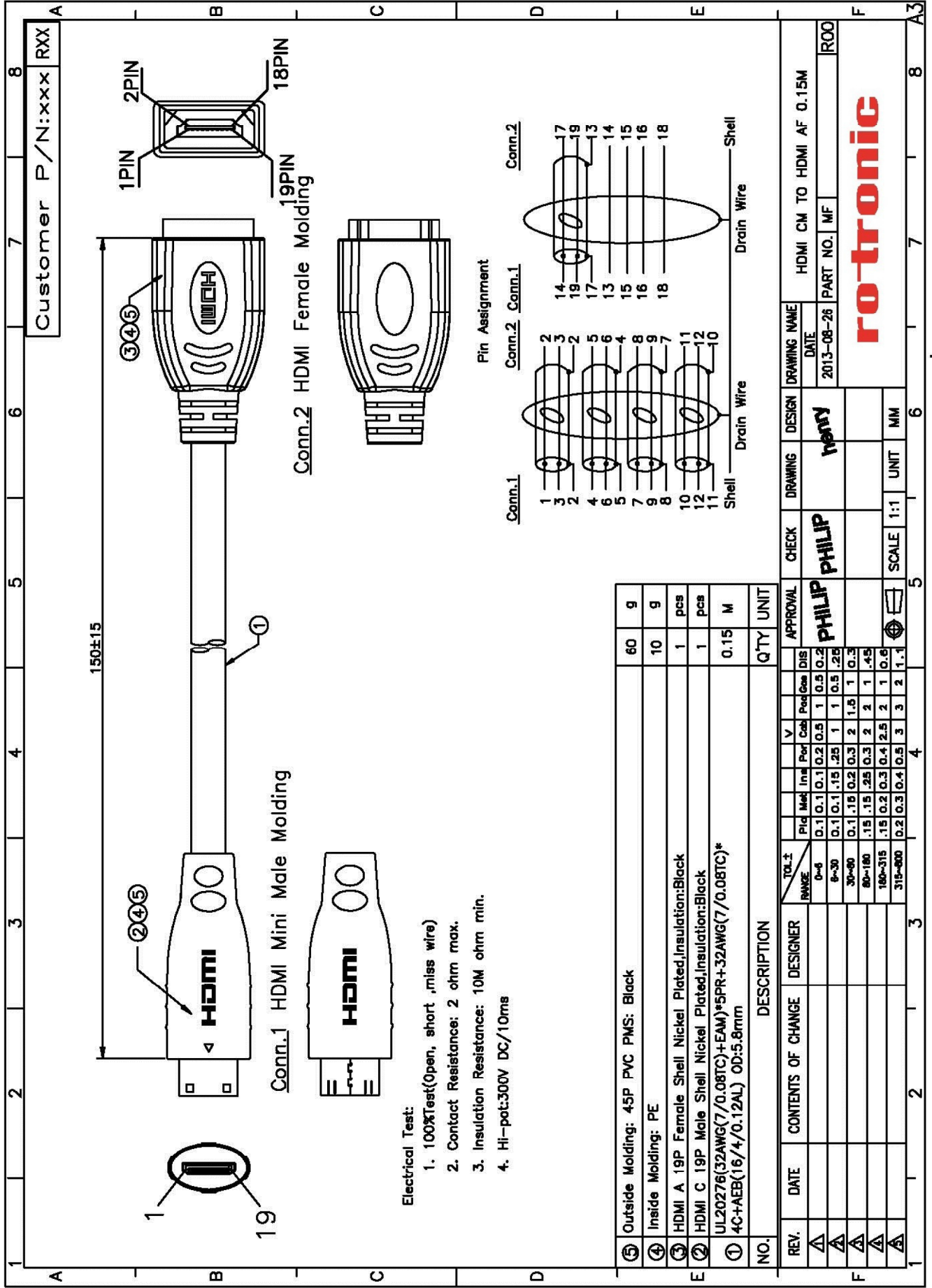
12.99.3120



VALUE HDMI Adapterkabel HDMI - HDMI Mini, BU/ST

VALUE Adaptateur HDMI, HDMI F - HDMI Mini M

VALUE Cableadapter, HDMI F - HDMI Mini M



Customer P/N:xxx RXX

150±15

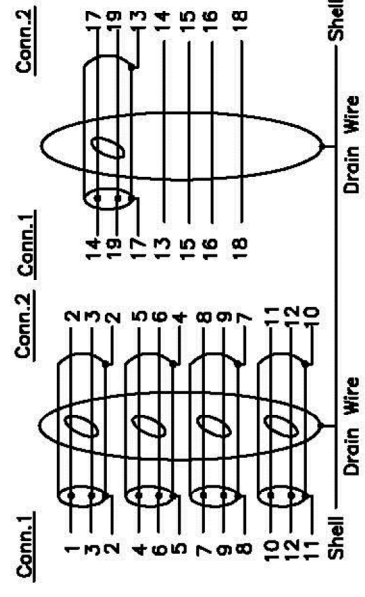
Conn.1 HDMI Mini Male Molding

Conn.2 HDMI Female Molding

Electrical Test:

1. 100%Test(Open, short ,miss wire)
2. Contact Resistance: 2 ohm max.
3. Insulation Resistance: 10M ohm min.
4. Hi-pot:300V DC/10ms

Pin Assignment



NO.	DESCRIPTION	QTY	UNIT
⑤	Outside Molding: 45P PVC PMS: Black	60	g
④	Inside Molding: PE	10	g
③	HDMI A 19P Female Shell Nickel Plated,Insulation:Black	1	pcs
②	HDMI C 19P Male Shell Nickel Plated,Insulation:Black	1	pcs
①	UL20276(32AWG(7/0.08TC)+EAM)*SPR+32AWG(7/0.08TC)*4C+AEB(16/4/0.12AL) OD:5.8mm	0.15	M

REV.	DATE	CONTENTS OF CHANGE	DESIGNER	DESIGN	CHECK	APPROVAL	DRAWING NAME
△				PHILIP	PHILIP	new	HDMI CM TO HDMI AF 0.15M
△							DATE: 2013-08-26
△							PART NO. MF R00
△							
△							
△							
△							
△							
△							

rotronic

SCALE	UNIT	MM
1:1	MM	