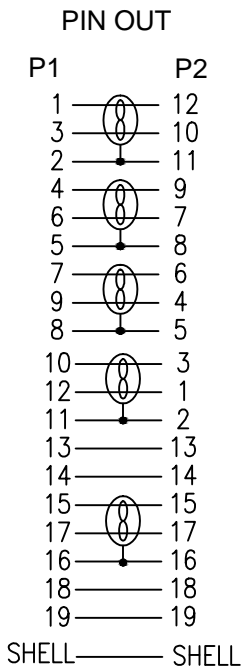
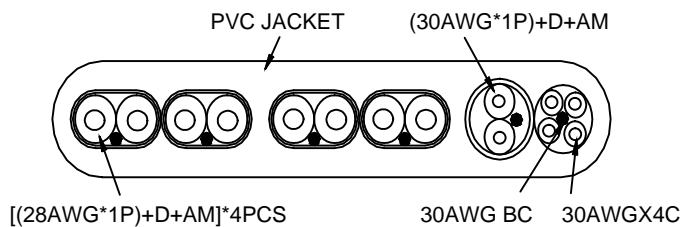
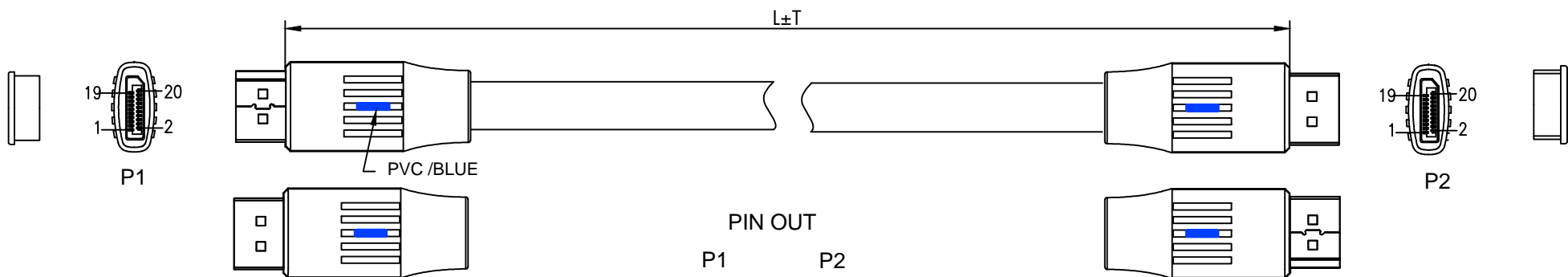


CONFIGURATION DETAILS OF
UNDIMENSIONED FEATURES
MAY VARY

REVISIONS			
REV	DESCRIPTION	DATE	APPROVED
A		2022/11/25	



NOTE:

1. Electronic test
 - 1.1 Open/short 100% test
2. Tested by TOATLPHASE Advanced Cable Tester 2 for DP1.4(32.4G)
Support 7680*4320 30Hz 4:4:4
Support 7680*4320 60Hz 4:2:0 or DSC
4. Tested by PC,3840*2160 120Hz 4:4:4 8bit HDR OFF
Tested by PC,3840*2160 120Hz 4:2:2 12bit HDR ON
Tested by PC,3840*2160 60Hz 4:4:4 12bit HDR ON
RoHS2.0(2011/65/EU) AND (2015/863/EU) WITH REACH COMPLIANT

ITEM NO.	LENGTH
11.99.5861	1000±20
11.99.5862	2000±20
11.99.5863	3000±30
11.99.5864	5000±50

NO.	PART NAME	DESCRIPTION	QUANTITY	REMARKS
⑤	DUST COVER	TRANSPARENT PE	1	
④	OUTER MOLD	PVC/BLACK	1	
③	DP MALE	DP1.4 MALE, BLACK INSULATION, GOLD PLATED PIN, GOLD PLATED SHELL	1	
②	DP MALE	DP1.4 MALE, BLACK INSULATION, GOLD PLATED PIN, GOLD PLATED SHELL	1	
①	CABLE	(28AWG/1 BC*2C+E+AM+HM)*4F+(30AWG/1 BC*1P+E+AM+M)*1F+(30AWG/1 BC)*4C +E+Jacket:PVC /black ,OD2.3*13mm	1	

NAME VALUE DisplayPort Cable v1.4, Flat, M/M

Item no. See the chart

SECOMP

MAPE	TOLERANCE	
	X.	±1.00
	X.X	±0.50
DRAW BY	SCALE	MM
	PAGE	1/1