



**Datenblatt - Fiche technique - Data sheet**

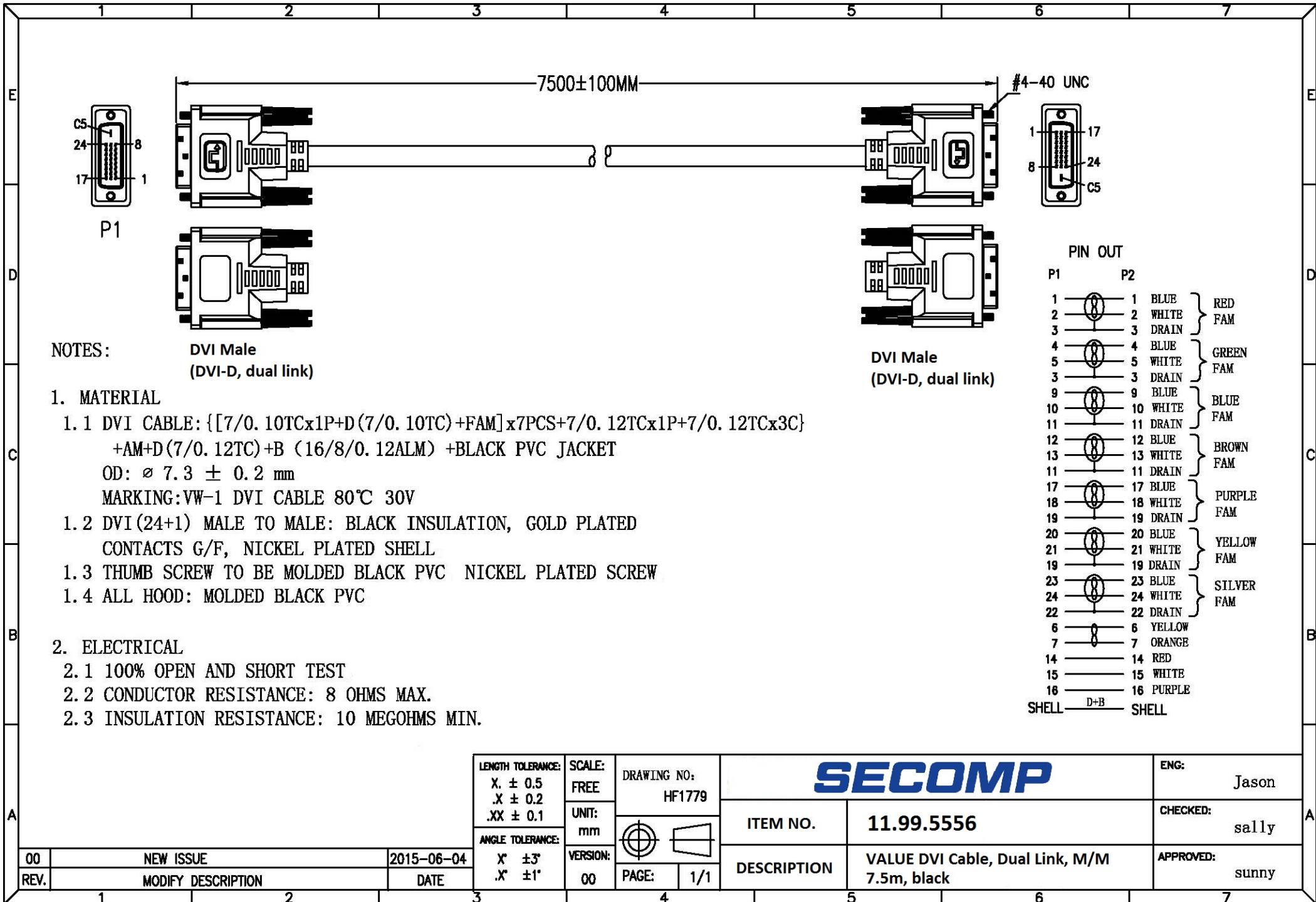
**11.99.5556**



**VALUE Monitorkabel DVI, DVI ST-ST, (24+1) dual link, 7,5 m**

**VALUE Câble DVI, DVI M-M, (24+1) dual link, 7,5 m**

**VALUE Monitor DVI Cable, DVI (24+1), Dual Link, M/M, 7.5 m**



**NOTES:**

**DVI Male**  
(DVI-D, dual link)

**DVI Male**  
(DVI-D, dual link)

**1. MATERIAL**

- 1.1 DVI CABLE: {[7/0.10TCx1P+D(7/0.10TC)+FAM]x7PCS+7/0.12TCx1P+7/0.12TCx3C}  
+AM+D(7/0.12TC)+B (16/8/0.12ALM) +BLACK PVC JACKET  
OD:  $\varnothing 7.3 \pm 0.2$  mm  
MARKING: VW-1 DVI CABLE 80°C 30V
- 1.2 DVI(24+1) MALE TO MALE: BLACK INSULATION, GOLD PLATED CONTACTS G/F, NICKEL PLATED SHELL
- 1.3 THUMB SCREW TO BE MOLDED BLACK PVC NICKEL PLATED SCREW
- 1.4 ALL HOOD: MOLDED BLACK PVC

**2. ELECTRICAL**

- 2.1 100% OPEN AND SHORT TEST
- 2.2 CONDUCTOR RESISTANCE: 8 OHMS MAX.
- 2.3 INSULATION RESISTANCE: 10 MEGOHMS MIN.

**PIN OUT**

P1	P2	Color	FAM
1	1	BLUE	RED FAM
2	2	WHITE	
3	3	DRAIN	GREEN FAM
4	4	BLUE	
5	5	WHITE	BLUE FAM
9	9	BLUE	
10	10	WHITE	BROWN FAM
11	11	DRAIN	
12	12	BLUE	PURPLE FAM
13	13	WHITE	
11	11	DRAIN	YELLOW FAM
17	17	BLUE	
18	18	WHITE	SILVER FAM
19	19	DRAIN	
20	20	BLUE	SHELL
21	21	WHITE	
19	19	DRAIN	SHELL
23	23	BLUE	
24	24	WHITE	SHELL
22	22	DRAIN	
6	6	YELLOW	SHELL
7	7	ORANGE	
14	14	RED	SHELL
15	15	WHITE	
16	16	PURPLE	SHELL
SHELL	D+B	SHELL	

LENGTH TOLERANCE: X. $\pm 0.5$ .X $\pm 0.2$ .XX $\pm 0.1$	SCALE: FREE	DRAWING NO: HF1779
ANGLE TOLERANCE: X' $\pm 3$ ' .X' $\pm 1$ '	UNIT: mm	
VERSION: 00	PAGE: 1/1	

<b>SECOMP</b>		ENG: Jason
ITEM NO.	11.99.5556	CHECKED: sally
DESCRIPTION	VALUE DVI Cable, Dual Link, M/M 7.5m, black	APPROVED: sunny

00	NEW ISSUE	2015-06-04
REV.	MODIFY DESCRIPTION	DATE