



Datenblatt - Fiche technique - Data sheet

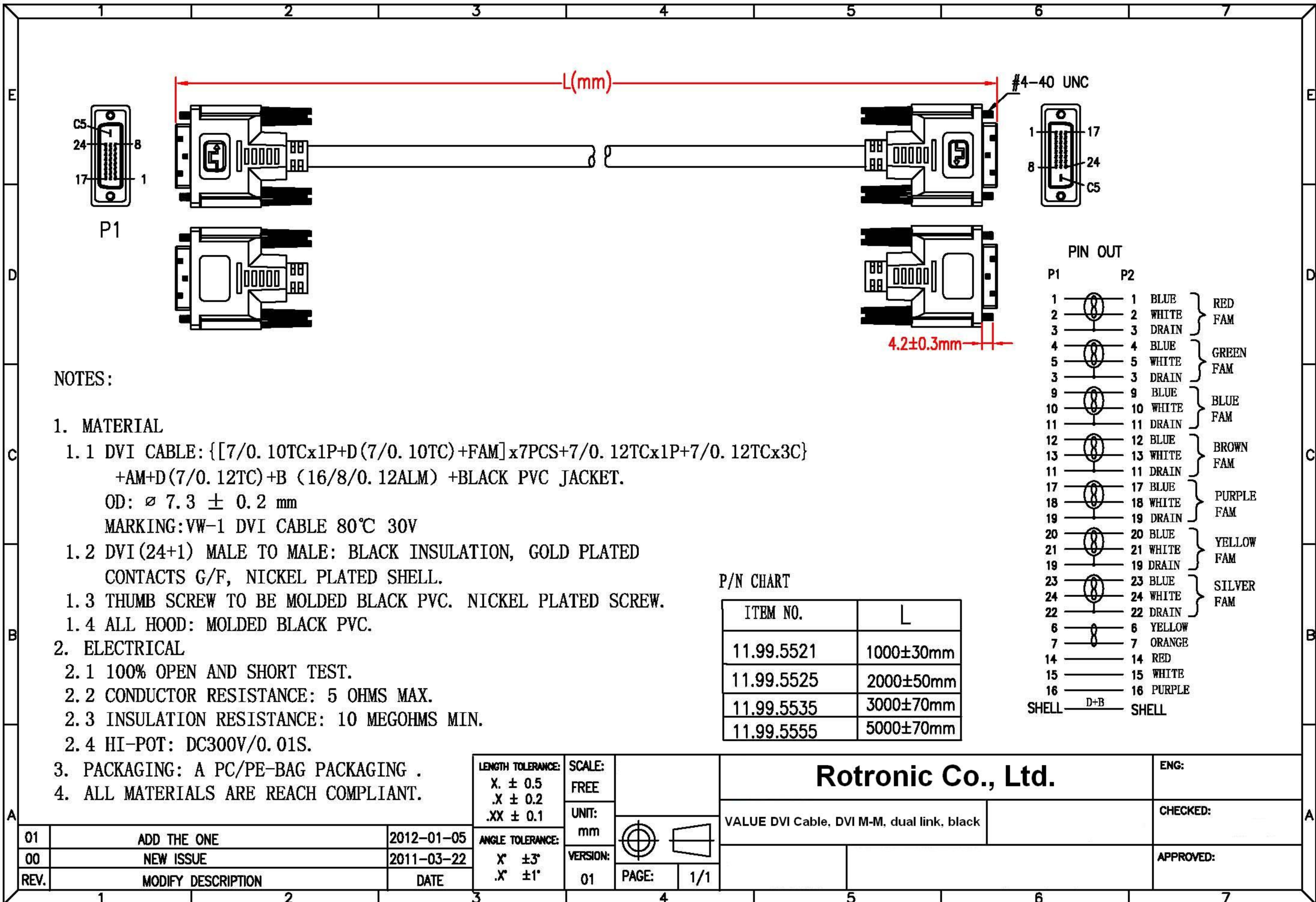
11.99.5521



VALUE Monitorkabel DVI, DVI ST-ST, (24+1) dual link, 1,0m

VALUE Câble DVI, DVI M-M, (24+1) dual link, 1,0m

VALUE Monitor DVI Cable, DVI (24+1), Dual Link, M/M, 1 m



NOTES:

1. MATERIAL

1.1 DVI CABLE: {[7/0.10TCx1P+D(7/0.10TC)+FAM]x7PCS+7/0.12TCx1P+7/0.12TCx3C} +AM+D(7/0.12TC)+B (16/8/0.12ALM) +BLACK PVC JACKET.

OD: $\varnothing 7.3 \pm 0.2 \text{ mm}$

MARKING: VW-1 DVI CABLE 80°C 30V

1.2 DVI(24+1) MALE TO MALE: BLACK INSULATION, GOLD PLATED CONTACTS G/F, NICKEL PLATED SHELL.

1.3 THUMB SCREW TO BE MOLDED BLACK PVC. NICKEL PLATED SCREW.

1.4 ALL HOOD: MOLDED BLACK PVC.

2. ELECTRICAL

2.1 100% OPEN AND SHORT TEST.

2.2 CONDUCTOR RESISTANCE: 5 OHMS MAX.

2.3 INSULATION RESISTANCE: 10 MEGOHMS MIN.

2.4 HI-POT: DC300V/0.01S.

3. PACKAGING: A PC/PE-BAG PACKAGING .

4. ALL MATERIALS ARE REACH COMPLIANT.

P/N CHART

ITEM NO.	L
11.99.5521	1000±30mm
11.99.5525	2000±50mm
11.99.5535	3000±70mm
11.99.5555	5000±70mm

PIN OUT			
P1	P2		
1	1	BLUE	RED FAM
2	2	WHITE	
3	3	DRAIN	GREEN FAM
4	4	BLUE	
5	5	WHITE	BLUE FAM
3	3	DRAIN	
9	9	BLUE	BROWN FAM
10	10	WHITE	
11	11	DRAIN	PURPLE FAM
12	12	BLUE	
13	13	WHITE	YELLOW FAM
11	11	DRAIN	
17	17	BLUE	SILVER FAM
18	18	WHITE	
19	19	DRAIN	
20	20	BLUE	
21	21	WHITE	
19	19	DRAIN	
23	23	BLUE	
24	24	WHITE	
22	22	DRAIN	
6	6	YELLOW	
7	7	ORANGE	
14	14	RED	
15	15	WHITE	
16	16	PURPLE	
SHELL	D+B	SHELL	

LENGTH TOLERANCE: X. ± 0.5 .X ± 0.2 .XX ± 0.1	SCALE: FREE	
ANGLE TOLERANCE: X° ± 3° .X° ± 1°	UNIT: mm	
	VERSION: 01	PAGE: 1/1

Rotronic Co., Ltd.		ENG:
VALUE DVI Cable, DVI M-M, dual link, black		CHECKED:
		APPROVED:

01	ADD THE ONE	2012-01-05
00	NEW ISSUE	2011-03-22
REV.	MODIFY DESCRIPTION	DATE