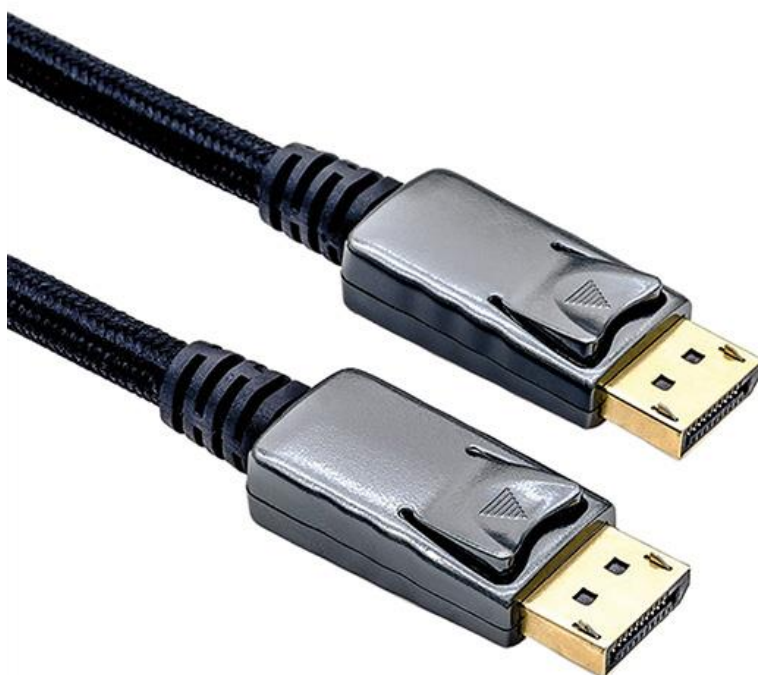




Datenblatt - Fiche technique - Data sheet

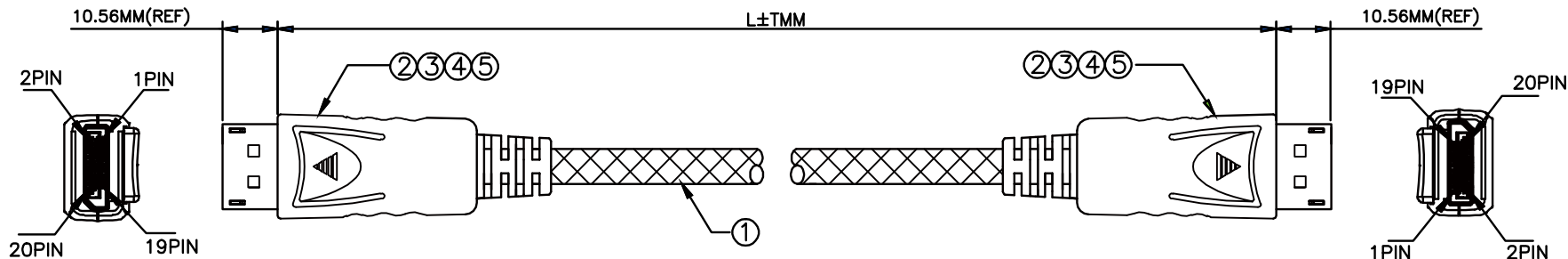
11.04.5882



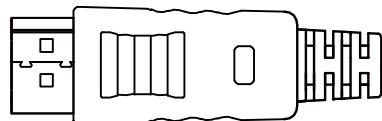
ROLINE DisplayPort Kabel, DP-DP, v1.2, ST - ST, schwarz-metallic, 3,0 m

ROLINE Câble DisplayPort DP-DP, v1.2, M - M, 3,0 m

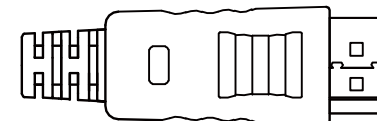
ROLINE DisplayPort Cable, DP-DP, v1.2, M/M, 3.0 m



Display Port Male



Display Port Male



Electrical Test :

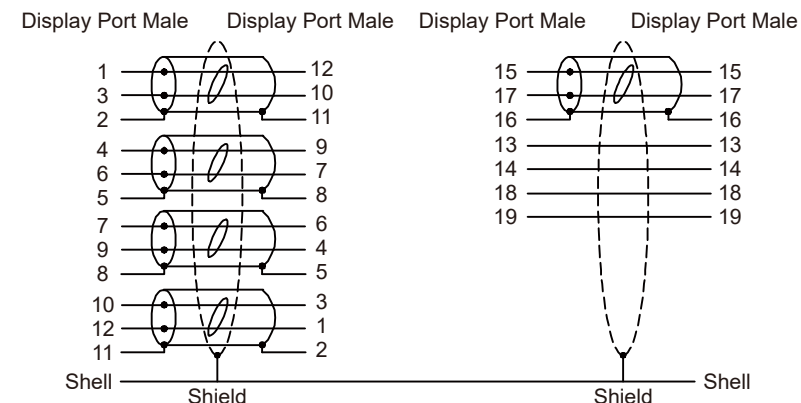
- 100% Test (Open, Short, Miss Wire)
- Contact Resistance: 2 ohm Max.
- Insulation Resistance: 10M ohm Min.
- Hi-Pot: 300V DC/10ms, 5. Bending 90D 2-3Times

Part No.	Length
11.04.5880	1000±30 mm
11.04.5881	2000±30 mm
11.04.5882	3000±50 mm

Specification :

- Cable** UL20276, (30AWG*1PR+D+AL/MY)*5+30AWG*4C+AL/MY +BD, OD: 6.3MM, Jacket: Black with Cotton Braid
- Connector** Display Port Male, Pin: Gold Plated 3u", Insulator: Black, Shell: Gold Plated 1u"
- Shell** For Display Port, ABS, Color: Gray
- Outside Molding** PVC: 45P, Color: Black
- Inside Molding** PE

Pin Assignment



Rev.	Date	Contents of Change	Designer	Tol±	Range	Pla	Met	Ins	Por	Cab	Pac	Gas	Dis	Approve	Check	Draw	Design	Product Name	Product No.
△					0~6	0.1	0.1	0.1	0.2	0.5	1	0.5	0.2	Allen	Allen		Philip	ROLINE SILVER DisplayPort Cable v1.2, M/M	11.04.5880/11.04.5881/11.04.5882 R00
△				6~30	0.1	0.1	.15	.25	1	1	0.5	.25	2017/3/27						
△				30~80	0.1	.15	0.2	0.3	2	1.5	1	0.3							
△				80~180	.15	.15	.25	0.3	2	2	1	.45							
△				180~315	.15	0.2	0.3	0.4	2.5	2	1	0.6							
△				315~800	0.2	0.3	0.4	0.5	3	3	2	1.1		Scale	1 : 1	Unit	mm		

